

Patientname	: Example IsoHypertension	Patient Nr.	:	Date of Birth	:	7/7/1951
Sex	: female	Station	:	Age	:	57 years
Address	: Musterstrasse 1 6341 Musterstadt	Pacemaker	:	Weight	:	80.0 kg
Telephone	: 0123-456789			Height	:	156.0 cm
				BMI	:	32.87
				Device	:	290.00071

Referred by	: Dr. Family
Medication	: Thiazide diuretics
Indication	: Arterial hypertension suspected
Remarks	: High systolic blood pressure, Obesity, Sedentary life

Analysis Summary :

Recording	Date / Time
Start	4/13/2005 8:30:00 AM
Stop	4/14/2005 8:30:00 AM
Duration [h]	24:00

Base value [mmHg]	155 / 98
Valid Measurements	77 / 81 (95 %)

Period	Active			Resting			Total		
	Mean	Min	Max	Mean	Min	Max	Mean	Min	Max
SYS [mmHg]	145	87	171	124	108	150	140	87	171
DIA [mmHg]	90	51	111	72	60	100	85	51	111
MAP [mmHg]	108	55	129	91	77	128	104	55	129
HR [bpm]	68	52	103	60	48	92	66	48	103
BP-Amplitude [mmHg]	55			52			55		
Measurements	57			20			77		
SYS > Limit	38 (67 %) > 140 mmHg			10 (50 %) > 120 mmHg			48 (62 %)		
DIA > Limit	31 (54 %) > 90 mmHg			4 (20 %) > 80 mmHg			35 (45 %)		
MAP > Limit	6 (11 %) > 120 mmHg			4 (20 %) > 100 mmHg			10 (13 %)		
HR > Limit	2 (4 %) > 100 bpm			1 (5 %) > 80 bpm			3 (4 %)		

Diagnosis	: Isolated systolic hypertension, grade 1
Interpreting physician : Dr. Examiner	Signature :

Statistics Day 1 :

Total	
Date	4/13/2005
Measurements	77
SYS > Limit	48 (62 %)
DIA > Limit	35 (45 %)
MAP > Limit	10 (13 %)
HR > Limit	3 (4 %)
SYS Day-Night Decay	14 %
DIA Day-Night Decay	20 %
HR Day-Night Decay	12 %
BP-Amplitude	55 mmHg
OSC / AUSC	9 / 68

Total		Mean	Minimum	Date / Time	Maximum	Date / Time	Std. Dev.
SYS	[mmHg]	140	87	4/14/2005 8:15 AM	171	4/13/2005 8:45 PM	16.6
DIA	[mmHg]	85	51	4/14/2005 8:15 AM	111	4/13/2005 6:00 PM	13.2
MAP	[mmHg]	104	55	4/14/2005 8:15 AM	129	4/13/2005 8:00 PM	14.3
HR	[bpm]	66	48	4/14/2005 3:30 AM	103	4/14/2005 8:15 AM	11.6

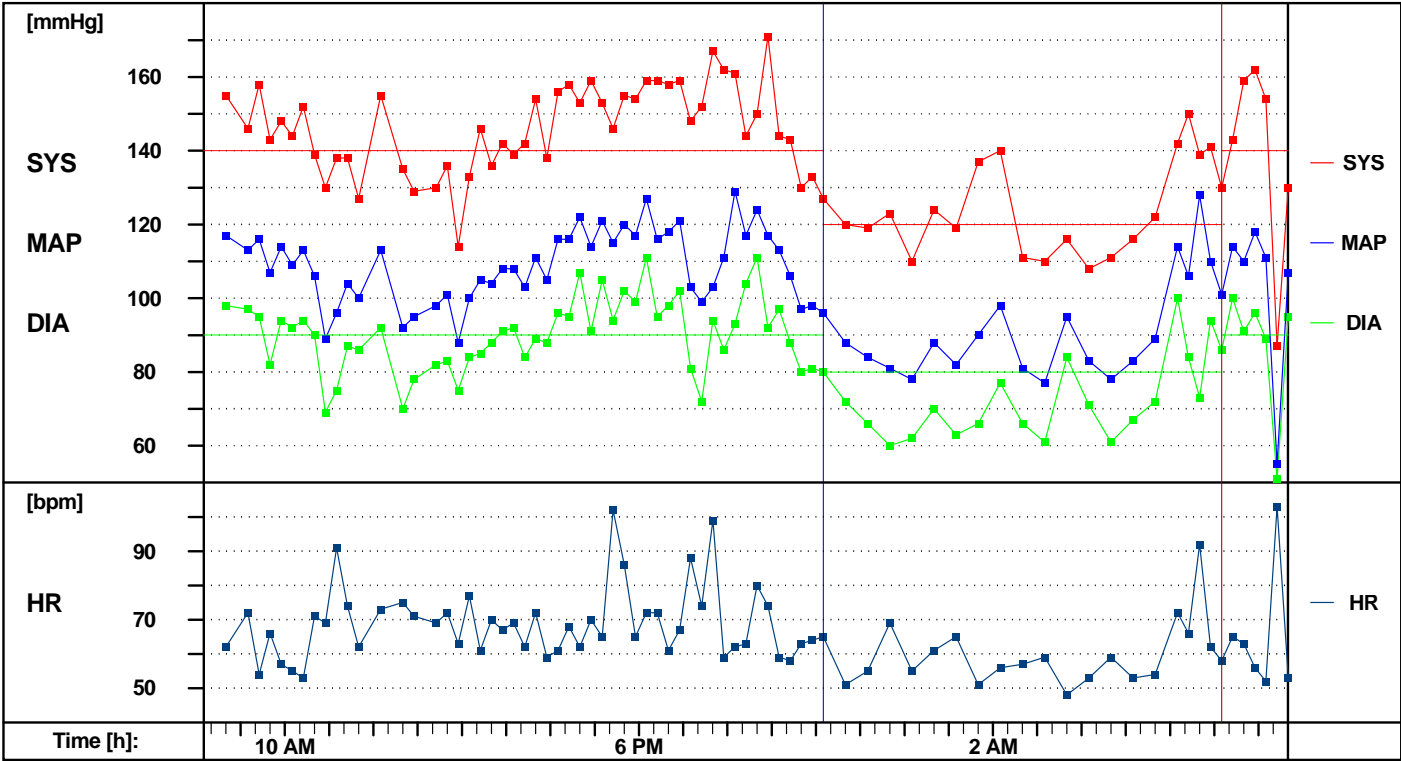
Active	
Period [h]	7:00 AM - 10:00 PM
Measurements	57
SYS > Limit	38 (67 %) > 140 mmHg
DIA > Limit	31 (54 %) > 90 mmHg
MAP > Limit	6 (11 %) > 120 mmHg
HR > Limit	2 (4 %) > 100 bpm
BP-Amplitude	55 mmHg
OSC / AUSC	8 / 49

Active		Mean	Minimum	Date / Time	Maximum	Date / Time	Std. Dev.
SYS	[mmHg]	145	87	4/14/2005 8:15 AM	171	4/13/2005 8:45 PM	14.2
DIA	[mmHg]	90	51	4/14/2005 8:15 AM	111	4/13/2005 6:00 PM	10.7
MAP	[mmHg]	108	55	4/14/2005 8:15 AM	129	4/13/2005 8:00 PM	11.7
HR	[bpm]	68	52	4/14/2005 8:00 AM	103	4/14/2005 8:15 AM	11.5

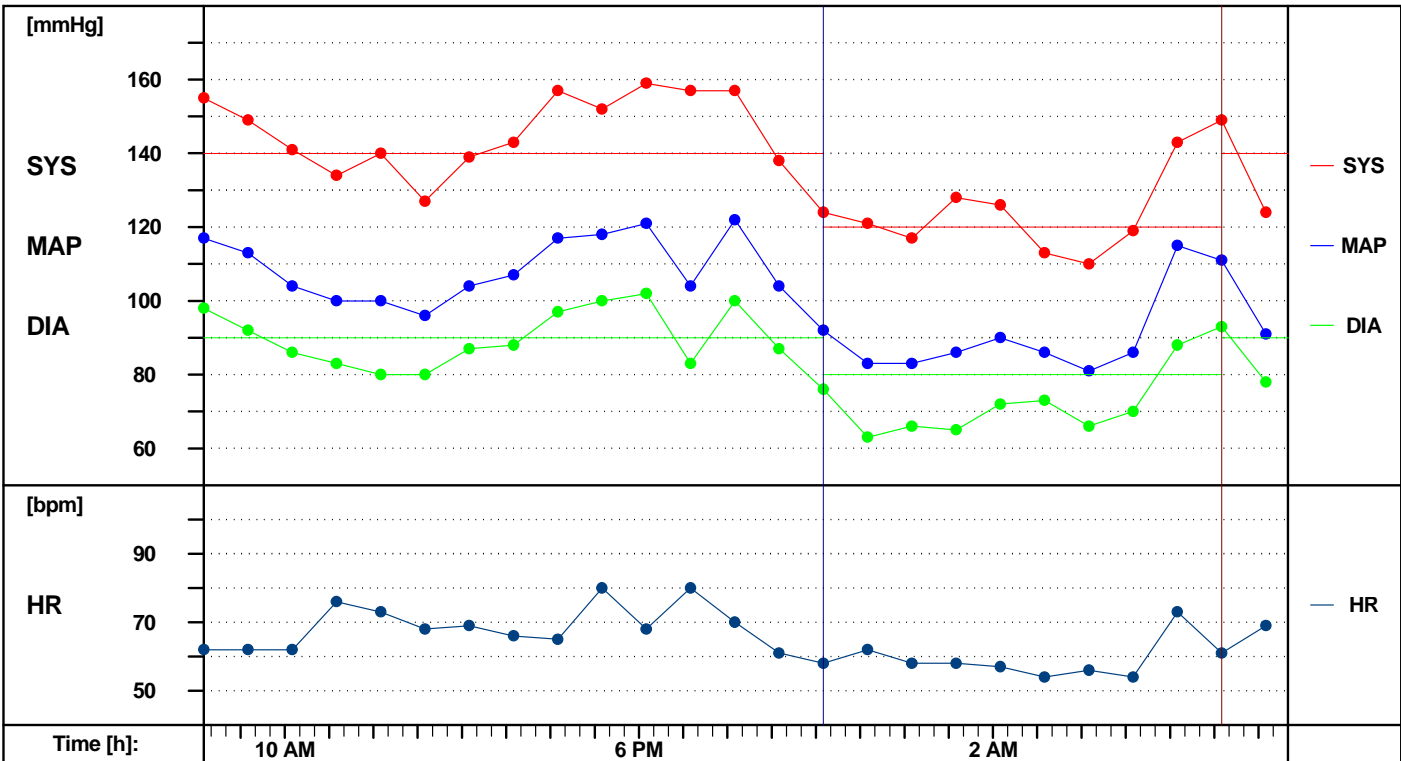
Resting	
Period [h]	10:00 PM - 7:00 AM
Measurements	20
SYS > Limit	10 (50 %) > 120 mmHg
DIA > Limit	4 (20 %) > 80 mmHg
MAP > Limit	4 (20 %) > 100 mmHg
HR > Limit	1 (5 %) > 80 bpm
BP-Amplitude	52 mmHg
OSC / AUSC	1 / 19

Resting		Mean	Minimum	Date / Time	Maximum	Date / Time	Std. Dev.
SYS	[mmHg]	124	108	4/14/2005 4:00 AM	150	4/14/2005 6:15 AM	12.8
DIA	[mmHg]	72	60	4/13/2005 11:30 PM	100	4/14/2005 6:00 AM	11.1
MAP	[mmHg]	91	77	4/14/2005 3:00 AM	128	4/14/2005 6:30 AM	13.7
HR	[bpm]	60	48	4/14/2005 3:30 AM	92	4/14/2005 6:30 AM	9.9

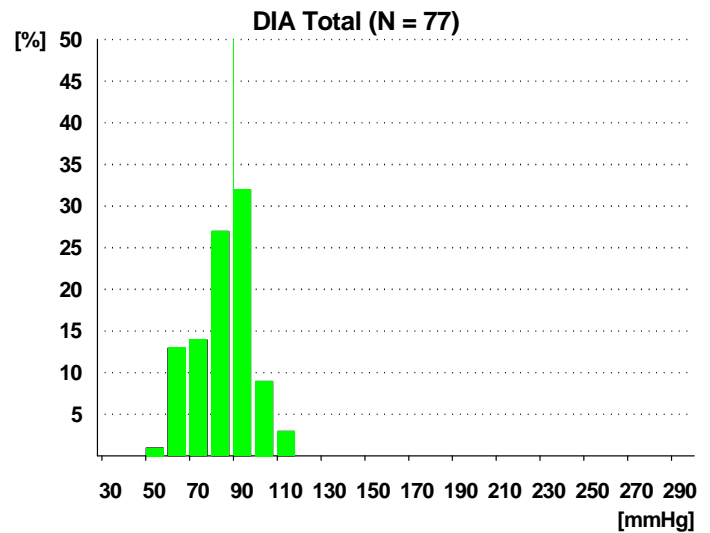
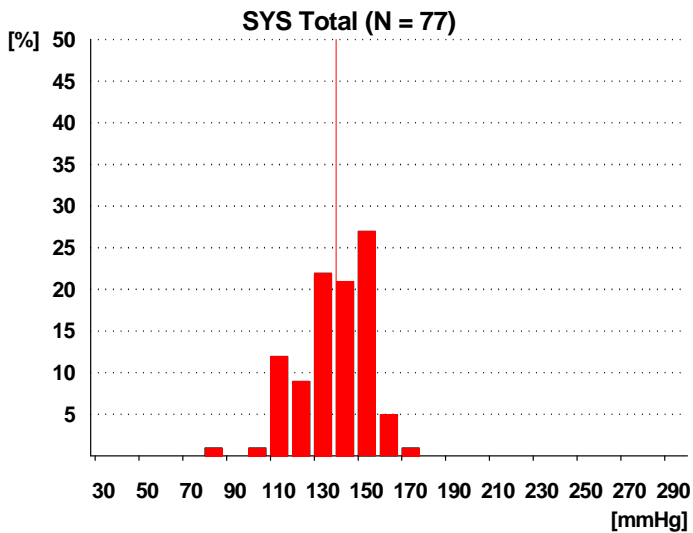
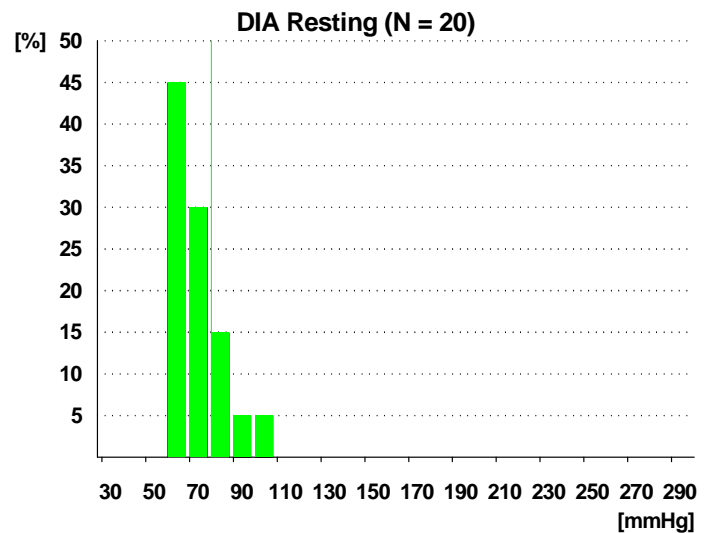
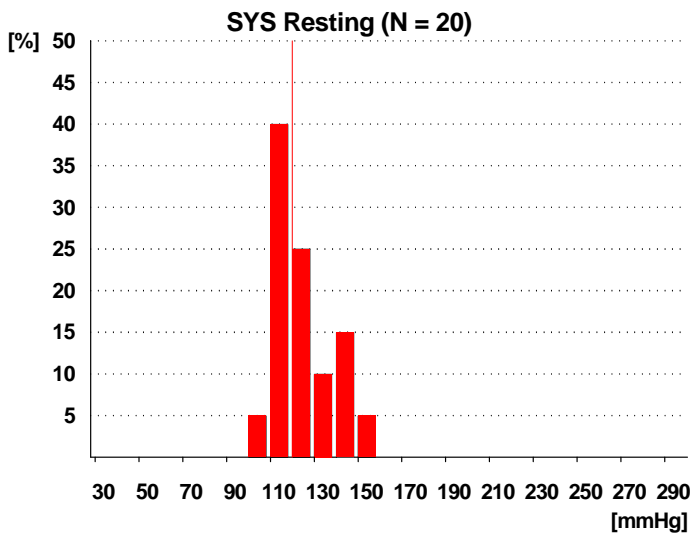
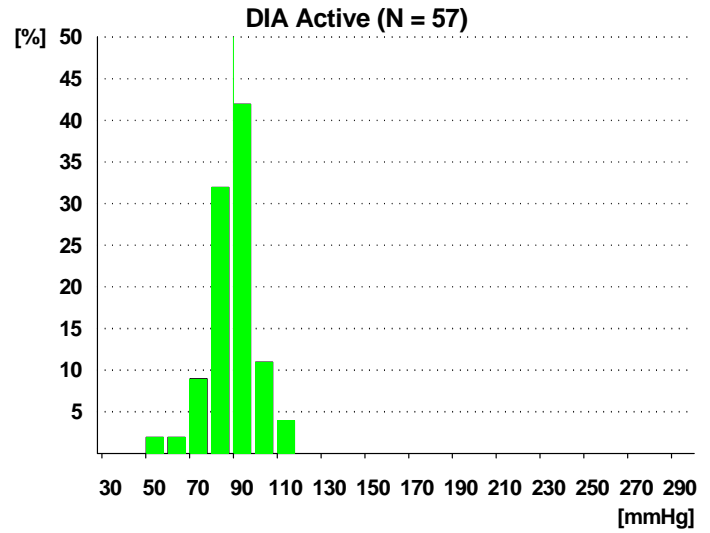
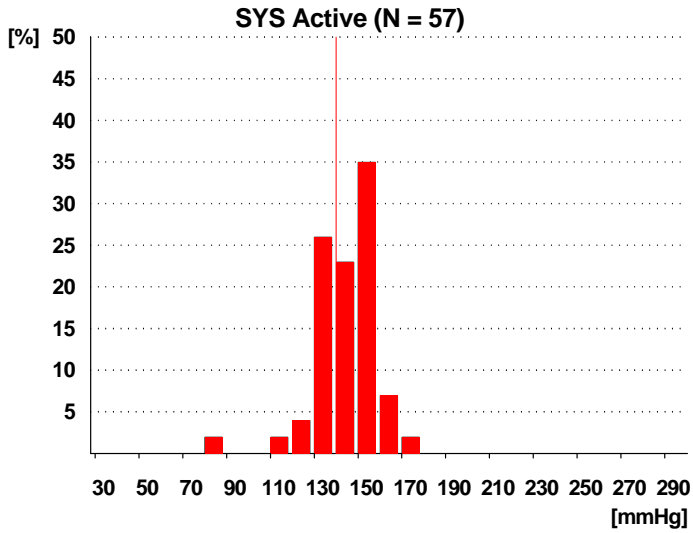
Trend Report Day 1 :



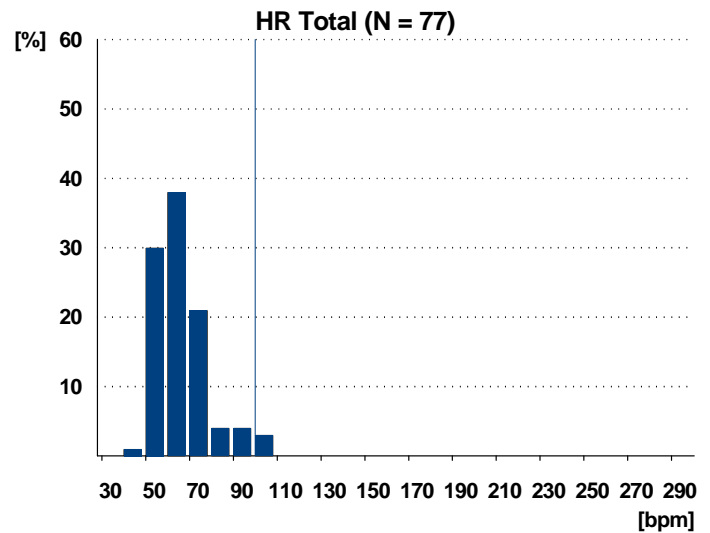
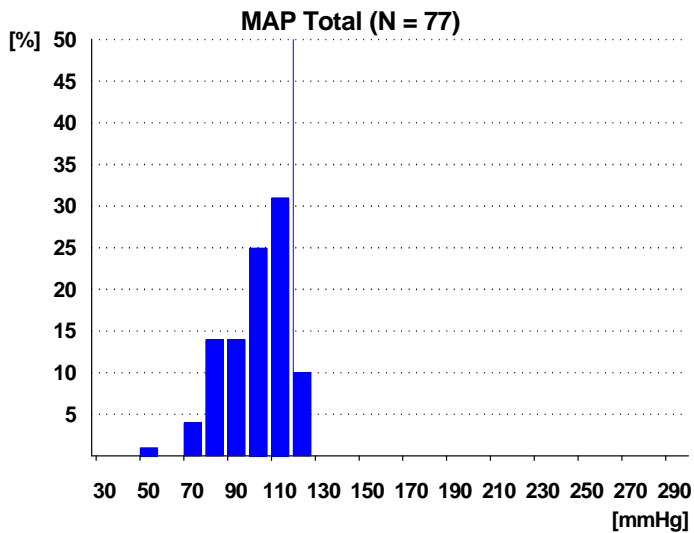
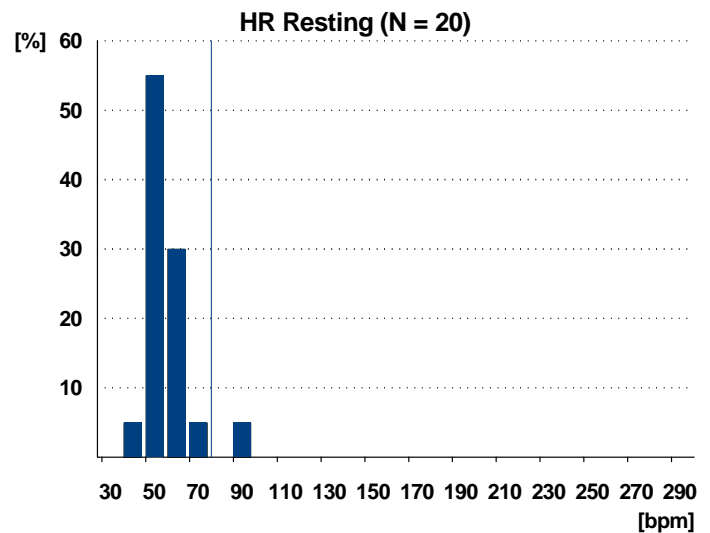
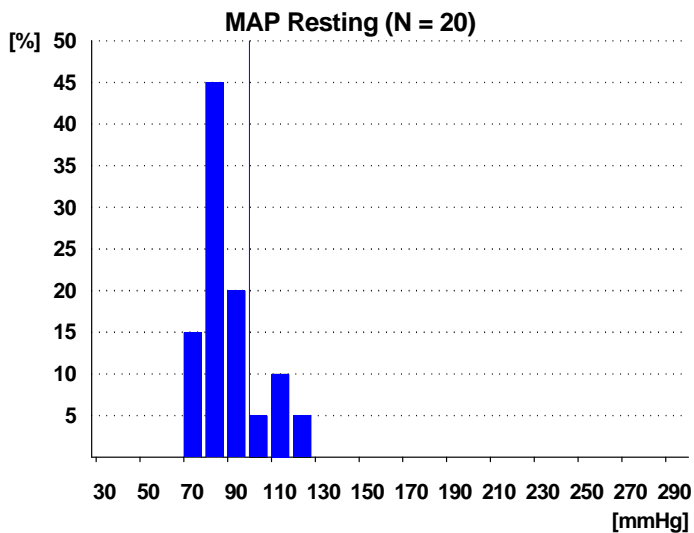
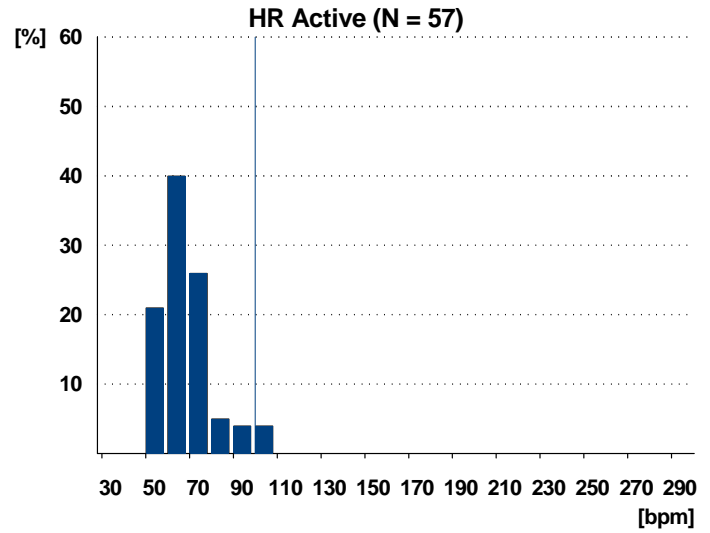
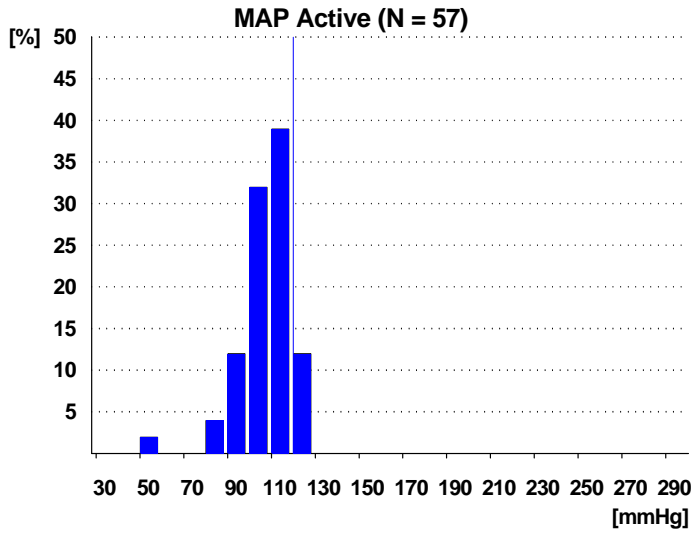
Average/h Data Day 1 :



Histograms Relative Day 1 :



Histograms Relative Day 1 :



Measurement Data :

Nr.	Time / Date	SYS [mmHg]	DIA [mmHg]	MAP [mmHg]	HR [bpm]	SYS - DIA [mmHg]	Method	Comment
1	8:30 AM 4/13/2005	155	98	117	62	57	AUSC	
2	8:45 AM 4/13/2005	-	-	-	-	-	-	Measurement excluded: Error: 127
3	9:00 AM 4/13/2005	146	97	113	72	49	AUSC	
4	9:15 AM 4/13/2005	158	95	116	54	63	AUSC	
5	9:30 AM 4/13/2005	143	82	107	66	61	OSC	
6	9:45 AM 4/13/2005	148	94	114	57	54	OSC	
7	10:00 AM 4/13/2005	144	92	109	55	52	AUSC	
8	10:15 AM 4/13/2005	152	94	113	53	58	AUSC	
9	10:30 AM 4/13/2005	139	90	106	71	49	AUSC	
10	10:45 AM 4/13/2005	130	69	89	69	61	AUSC	
11	11:00 AM 4/13/2005	138	75	96	91	63	AUSC	
12	11:15 AM 4/13/2005	138	87	104	74	51	AUSC	
13	11:30 AM 4/13/2005	127	86	100	62	41	AUSC	
14	11:45 AM 4/13/2005	-	-	-	-	-	-	Measurement excluded: Error: 198
15	12:00 PM 4/13/2005	155	92	113	73	63	AUSC	
16	12:15 PM 4/13/2005	-	-	-	-	-	-	Measurement excluded: Error: 199
17	12:30 PM 4/13/2005	135	70	92	75	65	AUSC	
18	12:45 PM 4/13/2005	129	78	95	71	51	AUSC	
19	1:00 PM 4/13/2005	-	-	-	-	-	-	Measurement excluded: Error: 127
20	1:15 PM 4/13/2005	130	82	98	69	48	AUSC	
21	1:30 PM 4/13/2005	136	83	101	72	53	AUSC	
22	1:45 PM 4/13/2005	114	75	88	63	39	AUSC	
23	2:00 PM 4/13/2005	133	84	100	77	49	AUSC	
24	2:15 PM 4/13/2005	146	85	105	61	61	AUSC	
25	2:30 PM 4/13/2005	136	88	104	70	48	AUSC	
26	2:45 PM 4/13/2005	142	91	108	67	51	AUSC	
27	3:00 PM 4/13/2005	139	92	108	69	47	AUSC	
28	3:15 PM 4/13/2005	142	84	103	62	58	AUSC	
29	3:30 PM 4/13/2005	154	89	111	72	65	AUSC	
30	3:45 PM 4/13/2005	138	88	105	59	50	AUSC	
31	4:00 PM 4/13/2005	156	96	116	61	60	AUSC	
32	4:15 PM 4/13/2005	158	95	116	68	63	AUSC	
33	4:30 PM 4/13/2005	153	107	122	62	46	AUSC	
34	4:45 PM 4/13/2005	159	91	114	70	68	AUSC	
35	5:00 PM 4/13/2005	153	105	121	65	48	AUSC	
36	5:15 PM 4/13/2005	146	94	115	102	52	OSC	
37	5:30 PM 4/13/2005	155	102	120	86	53	AUSC	
38	5:45 PM 4/13/2005	154	99	117	65	55	AUSC	
39	6:00 PM 4/13/2005	159	111	127	72	48	AUSC	
40	6:15 PM 4/13/2005	159	95	116	72	64	AUSC	

* : Resting Period

Measurement Data :

Nr.	Time / Date	SYS [mmHg]	DIA [mmHg]	MAP [mmHg]	HR [bpm]	SYS - DIA [mmHg]	Method	Comment
41	6:30 PM 4/13/2005	158	98	118	61	60	AUSC	
42	6:45 PM 4/13/2005	159	102	121	67	57	AUSC	
43	7:00 PM 4/13/2005	148	81	103	88	67	AUSC	
44	7:15 PM 4/13/2005	152	72	99	74	80	AUSC	
45	7:30 PM 4/13/2005	167	94	103	99	73	OSC	
46	7:45 PM 4/13/2005	162	86	111	59	76	AUSC	
47	8:00 PM 4/13/2005	161	93	129	62	68	OSC	
48	8:15 PM 4/13/2005	144	104	117	63	40	AUSC	
49	8:30 PM 4/13/2005	150	111	124	80	39	AUSC	
50	8:45 PM 4/13/2005	171	92	117	74	79	OSC	
51	9:00 PM 4/13/2005	144	97	113	59	47	AUSC	
52	9:15 PM 4/13/2005	143	88	106	58	55	AUSC	
53	9:30 PM 4/13/2005	130	80	97	63	50	AUSC	
54	9:45 PM 4/13/2005	133	81	98	64	52	AUSC	
55	* 10:00 PM 4/13/2005	127	80	96	65	47	AUSC	
56	* 10:30 PM 4/13/2005	120	72	88	51	48	AUSC	
57	* 11:00 PM 4/13/2005	119	66	84	55	53	AUSC	
58	* 11:30 PM 4/13/2005	123	60	81	69	63	AUSC	
59	* 12:00 AM 4/14/2005	110	62	78	55	48	AUSC	
60	* 12:30 AM 4/14/2005	124	70	88	61	54	AUSC	
61	* 1:00 AM 4/14/2005	119	63	82	65	56	AUSC	
62	* 1:30 AM 4/14/2005	137	66	90	51	71	AUSC	
63	* 2:00 AM 4/14/2005	140	77	98	56	63	AUSC	
64	* 2:30 AM 4/14/2005	111	66	81	57	45	AUSC	
65	* 3:00 AM 4/14/2005	110	61	77	59	49	AUSC	
66	* 3:30 AM 4/14/2005	116	84	95	48	32	AUSC	
67	* 4:00 AM 4/14/2005	108	71	83	53	37	AUSC	
68	* 4:30 AM 4/14/2005	111	61	78	59	50	AUSC	
69	* 5:00 AM 4/14/2005	116	67	83	53	49	AUSC	
70	* 5:30 AM 4/14/2005	122	72	89	54	50	AUSC	
71	* 6:00 AM 4/14/2005	142	100	114	72	42	AUSC	
72	* 6:15 AM 4/14/2005	150	84	106	66	66	AUSC	
73	* 6:30 AM 4/14/2005	139	73	128	92	66	OSC	
74	* 6:45 AM 4/14/2005	141	94	110	62	47	AUSC	
75	7:00 AM 4/14/2005	130	86	101	58	44	AUSC	
76	7:15 AM 4/14/2005	143	100	114	65	43	AUSC	
77	7:30 AM 4/14/2005	159	91	110	63	68	OSC	
78	7:45 AM 4/14/2005	162	96	118	56	66	AUSC	
79	8:00 AM 4/14/2005	154	89	111	52	65	AUSC	
80	8:15 AM 4/14/2005	87	51	55	103	36	OSC	
81	8:30 AM 4/14/2005	130	95	107	53	35	AUSC	
Mean		140	85	104	66	55		

* : Resting Period

Average/h Data :

h	Time / Date	Number of Measurements	SYS [mmHg]	DIA [mmHg]	MAP [mmHg]	HR [bpm]	SYS - DIA [mmHg]
1	8:00 AM 4/13/2005	1	155	98	117	62	57
2	9:00 AM 4/13/2005	4	149	92	113	62	57
3	10:00 AM 4/13/2005	4	141	86	104	62	55
4	11:00 AM 4/13/2005	3	134	83	100	76	51
5	12:00 PM 4/13/2005	3	140	80	100	73	60
6	1:00 PM 4/13/2005	3	127	80	96	68	47
7	2:00 PM 4/13/2005	4	139	87	104	69	52
8	3:00 PM 4/13/2005	4	143	88	107	66	55
9	4:00 PM 4/13/2005	4	157	97	117	65	60
10	5:00 PM 4/13/2005	4	152	100	118	80	52
11	6:00 PM 4/13/2005	4	159	102	121	68	57
12	7:00 PM 4/13/2005	4	157	83	104	80	74
13	8:00 PM 4/13/2005	4	157	100	122	70	57
14	9:00 PM 4/13/2005	4	138	87	104	61	51
15	10:00 PM 4/13/2005	2	124	76	92	58	48
16	11:00 PM 4/13/2005	2	121	63	83	62	58
17	12:00 AM 4/14/2005	2	117	66	83	58	51
18	1:00 AM 4/14/2005	2	128	65	86	58	63
19	2:00 AM 4/14/2005	2	126	72	90	57	54
20	3:00 AM 4/14/2005	2	113	73	86	54	40
21	4:00 AM 4/14/2005	2	110	66	81	56	44
22	5:00 AM 4/14/2005	2	119	70	86	54	49
23	6:00 AM 4/14/2005	4	143	88	115	73	55
24	7:00 AM 4/14/2005	4	149	93	111	61	56
25	8:00 AM 4/14/2005	3	124	78	91	69	46